

## GERMAN FUNCTIONALISM – Häring, Mendelsohn, Taut

### GERMAN NEUES BAUEN ("New Building")

Some Influences / Precedents:

- American efficiency, Christine Frederick
- De Stijl Neo-plasticism
- Russian Constructivism & Suprematism
- F.L. Wright



### Vernacular Functionalism

Anti-Modern = Heimat Movement

P. Schmitthenner's "Stuttgart School",

cf. Stuttgart Train Station, Bonatz, 1911-14

Progressive "Der Ring" (1924) vs. Conservative "Der Block" (1925)



### Expressionist Functionalism

Bruno Taut, Siedlung Eichkamp, Berlin, 1919-24, 1926-7

"Colorful Magdeburg" 1920-4

Bruno Taut, Own House, Berlin-Dahlewitz, 1926

### \* Organic Functionalism – Hans Scharoun & Hugo Häring

Bauwelthaus, H. Jarchow, 1924

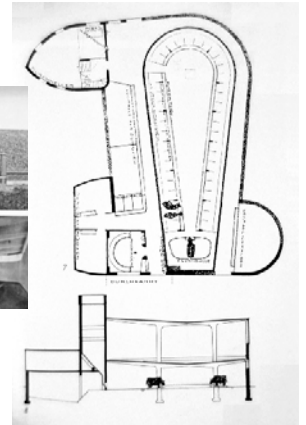
Hugo Häring, Gut Garkau, Lubeck, 1924

### \* Dynamic Functionalism -- Erich Mendelsohn (1887-1953)

Mossehaus (Newspaper Office), Berlin, 1922

### \* Schocken Department Store, Berlin, 1926-29

cf. Universum Cinema, Berlin, 1927-31



### Rational or Machine Functionalism: "Neues Bauen" in Berlin

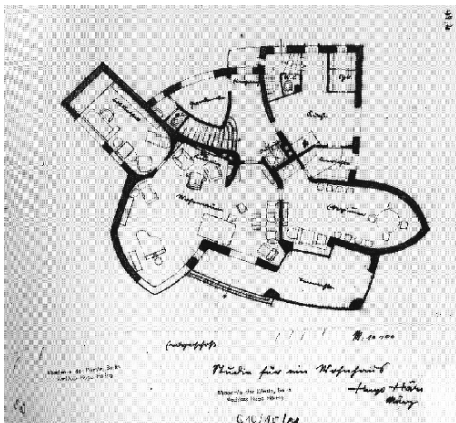
Erich Mendelsohn, Sternefeld House, Berlin-Westend, 1923-4

Richard Neutra, "Sommerfeld's Aue, Berlin-Zehlendorf, 1923

Ludwig Hilberseimer, Own Haus, Berlin-Zehlendorf, 1927

H.&W. Luckhardt, Am Rupenhorn Houses, Berlin-Westend, 1927

H.&W. Luckhardt, Schorlemer Allee Apartments, 1924-30



Why is this functional? Expressive?  
Dynamic? Organic? Rational?  
Artistic? Stylized?